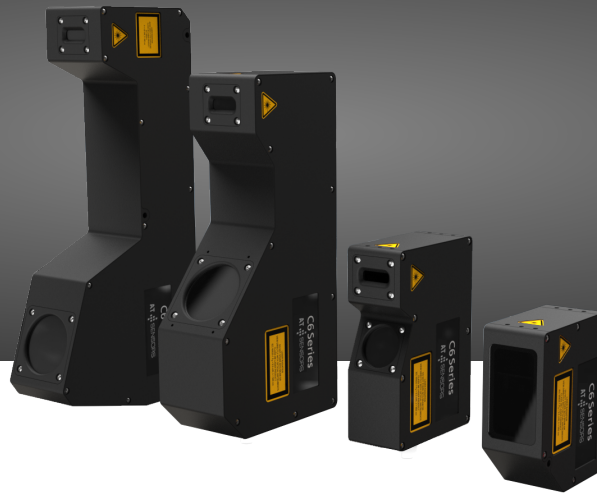


CS Series DATA SHEET

PN: 202209058, Model: C6-2040-CS-23-38-106-660-3B



- **Highly standardized, factory-calibrated 3D sensors**
- **Large selection of models with X-FOV 7 - 1290 mm**
- **Four different sensor resolutions available (1280, 2040, 3070, 4090)**
- **High industrial protection class IP67 Available with different laser classes and wavelengths**

The CS sensor series sets new standards in 3D laser triangulation technology with resolutions of up to 4096 pixels, profile frequencies of up to 204 kHz and fields of view of 7 to 1300 mm. These robust sensors with protection class IP67 and M12 connections for a reliable power supply and data transmission are available in various housing sizes. Integration is straightforward and takes place via standard interfaces such as Gigabit Ethernet or GenICam. The CS series thus offers a powerful, maintenance-free solution for OEM customers and end users in demanding industrial environments.

 [Visit our Website](#)

 [Contact us](#)

 [Visit our Product Documentation](#)

Model Information

Model Name	C6-2040-CS-23-38-106-660-3B
Part Number	202209058

General Data

Points per Profile	-
Triangulation Angle	23 °
Working Distance	106 mm
Laser Safety Class	class3b
Laser Wavelength	660 nm
Laser Output Power	130 mW
Laser Line Width	-
Linearity Z-Axis	0.013 % of calibrated Z-Range
Profile speed with 200-row region	1818 Hz
Maximum profile speed	43478 Hz

Field of View

	Nominal	Near Field	Far Field
Scan Width	38 mm	33.8 mm	42.4 mm
X-Resolution	18.6 µm	16.5 µm	20.7 µm
Z-Resolution	0.8 µm	-	-

Z-Range

	Full	Near Field	Far Field
Z-Range	30 mm	15 mm	15 mm

Technical Specifications

Interface	Gigabit-Ethernet (1GigE)
Inputs	Encoder A+, A-, B+, B-, Z+, Z- (TTL level) Two freely configurable digital inputs (+5 to +24 VDC)
Outputs	Two freely configurable digital outputs (+5 to +24 VDC)
Power Supply	Sensor supply +10 to +24 VDC (max. +27 VDC) Laser supply +10 to +24 VDC
Housing	Anodized aluminum IP67 certified
Environmental Conditions	Operating temperature: 0 to +40 °C Storage temperature: -20 to +80 °C Relative humidity: 20 to 80 % (non-condensing)
Vibration Resistance	Sinusoidal: DIN EN 60068-2-6:2008-10: 2g, 10-150 Hz Random: DIN EN 60068-2-64:2020-09: 7g, 10-500 Hz
Shock Resistance	DIN EN 60068-2-27: 2010-02: 15g, 3ms
Supported Standards	GenICam GigEVision
Firmware Features	RegionTracking, RegionSearch, Multiple Regions, MultiPart, AutoStart, HistoryBuffer, MultiSlope, MultiPeak
Software	SolutionPackage, MetrologyPackage, cxSDK with wrappers for C, C++, Python and Matlab

 [Visit our Website](#)

 [Contact us](#)

 [Visit our Product Documentation](#)

AT - Automation Technology GmbH
Hermann-Bössow-Straße 6-8
23843 Bad Oldesloe

AT - Automation Technology, Inc.
380 Main Street, Suite 203
Stoneham, MA 02180

www.at-sensors.com
support@automationtechnology.de
+49 (0)4531 / 88011-42